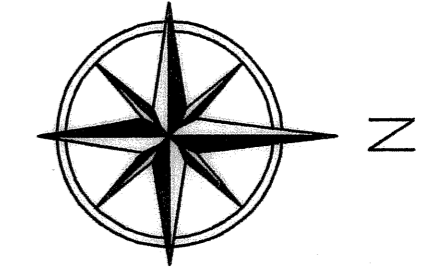


MONTEREY BAY, A PUD

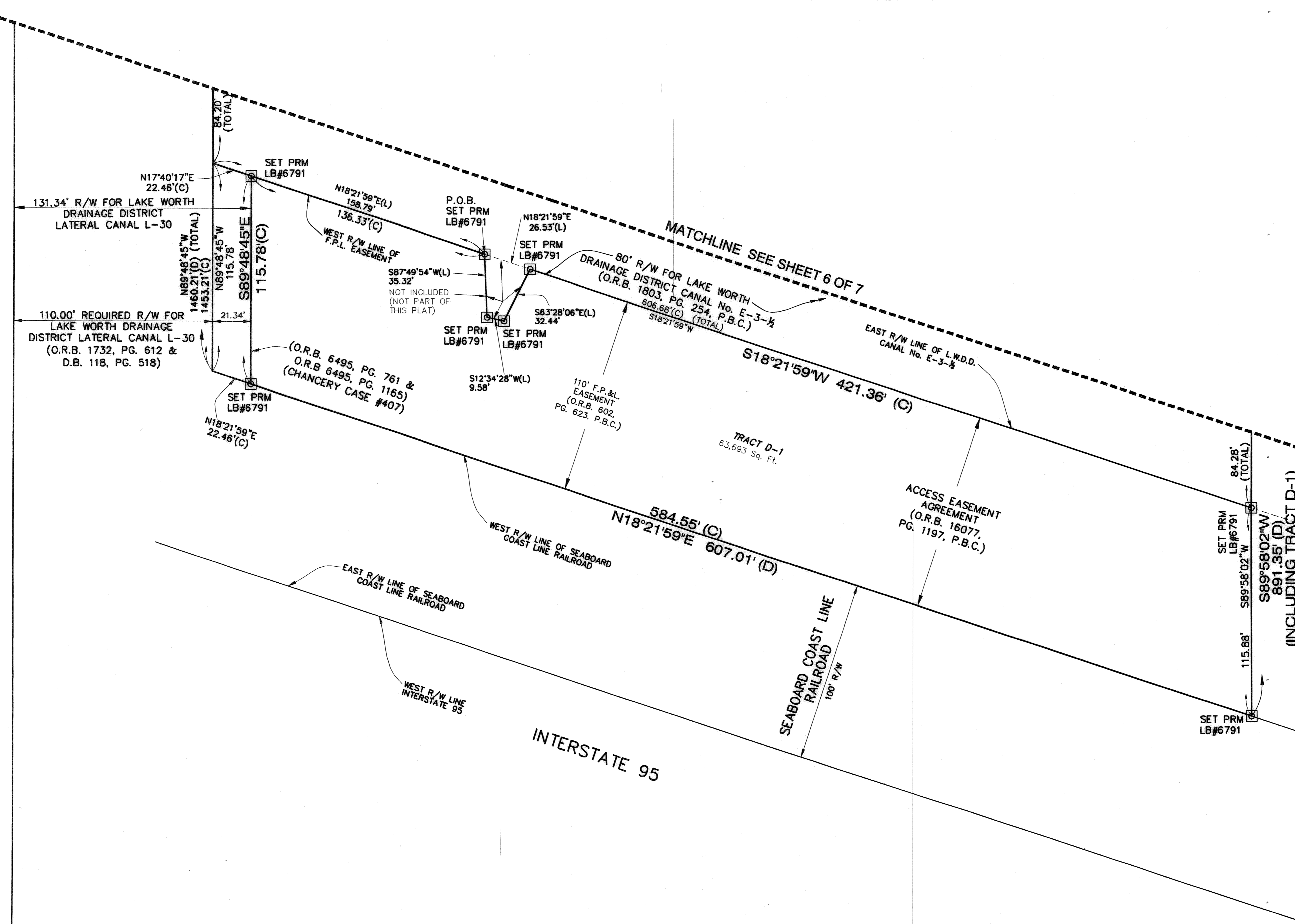
A PORTION OF THE SOUTHWEST ONE-QUARTER (SW 1/4) OF SECTION 5, TOWNSHIP 46 SOUTH, RANGE 43 EAST,
CITY OF BOYNTON BEACH, PALM BEACH COUNTY, STATE OF FLORIDA
APRIL 2004 SHEET 7 OF 7



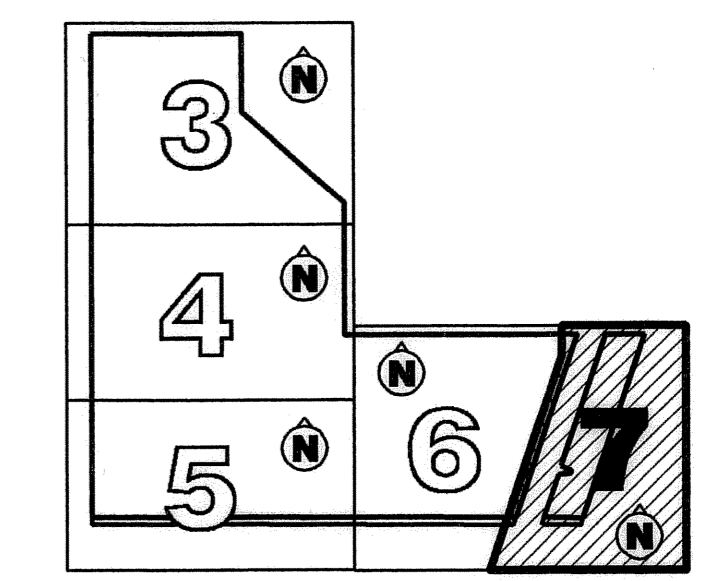
88

This Instrument Prepared By:
Robert W. Jackson, Jr., P.S.M.
Calvin, Giordano & Associates, Inc.
Engineers Surveyors Planners

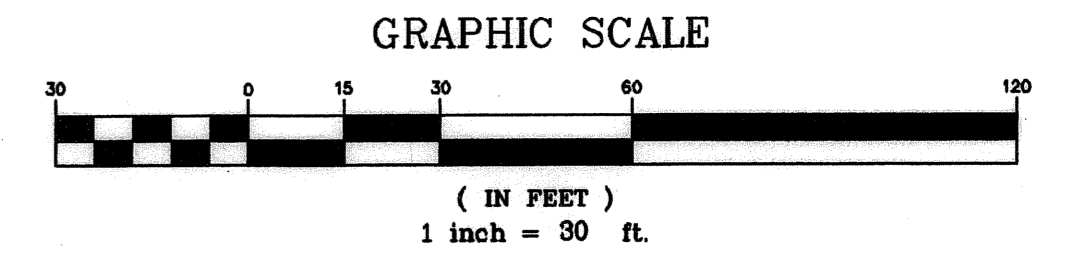
1800 Eller Drive, Suite 600
Ft. Lauderdale, Florida 33316
Phone: 954.921.7781 Fax 954.921.8807



- P.O.B. = POINT OF BEGINNING
- LB = LICENSED BUSINESS
- O.R.B. = OFFICIAL RECORDS BOOK
- P.B.C. = PALM BEACH COUNTY
- PG. = PAGE
- PRM = PERMANENT REFERENCE MONUMENT
- R/W = RIGHT OF WAY
- SQ.FT. = SQUARE FEET
- F.P.L. = FLORIDA POWER AND LIGHT
- (C) = CALCULATED
- (D) = PER DEED



SHEET KEY MAP



P:\Projects\2003\034515 Congress Boynton Beach\SURVEY\PLAT\034515-V-PLAT.dwg